

May 6 – WEDNESDAY – 7:30 p.m. – 9:00 p.m.

MONTHLY MEETING PROGRAM

St. Mary's College of Maryland Glendening Annex, Building 15, St. Mary's County 47645 College Drive, Parking Lot Z, St. Mary's City, MD 20686 "WHITE-THROATED SPARROWS"

MEGHAN WEBSTER, Biology Senior, St. Mary's College of Maryland

Southern Maryland Audubon Society has provided a grant to Meghan Webster in support of her study of White-throated Sparrows. Part of her work will examine the diurnal metabolic response to acute stress in this familiar fall and winter visitor to Southern Maryland. Light refreshments and mingling starts at 7 p.m. Public is invited. Free event. Inquiries to Tom Seaton at tjaccokeek@gmail.com or 301-710-3994.



May 9 – SATURDAY – May Count

COUNTY MAY COUNTS

Calvert, Charles, Prince George's, and St. Mary's Counties

Help is always needed and appreciated from all. This is a great way to learn and improve your bird identification skills! The county coordinators for you to contact are as follows:

CALVERT: Sherman Suter 401-586-1073, sjsuter29@verizon.net

CHARLES: Lynne Wheeler 301-751-8097, somdaudubon@yahoo.com

PRINCE GEORGE'S: Fred Fallon 401-286-8152, fwfallon@gmail.com

ST. MARY'S: Tyler Bell 301-862-4623, tylerbell@yahoo.com

May 16 – SATURDAY – 8 a.m. – 12 noon

FIELD TRIP

American Chestnut Land Trust, Calvert County

676 Double Oak Road, Prince Frederick, MD 20678

"WARBLERS AND SPRING MIGRATION"

Leader: Judy Ferris and Jan Degeneffe

Join us for one of our dazzling nature gems in Calvert County! ACLT, located just minutes from Prince Frederick, has 22 miles of trails across a 3,000 acre preserve. Explore this spectacular property via woodland paths in search of warblers and other neotropical songbirds. Bird migration will be strong, but so will the flood of breeding birds singing to establish and defend nesting territories. Depending on trail conditions, we may hike 2-3 miles. Muddy spots and insects are possible. Meet at the parking lot at the American Chestnut Land Trust Office. DIRECTIONS: From Route 4 in Prince Frederick, turn east onto Dares Beach Road/MD 402 (opposite Safeway). Go straight thru round-about. Continue 2.4 miles to Double Oak Road. Turn right onto Double Oak Road. Continue 1.5 miles to a signed gate and a dirt road on the left. Turn left onto the dirt road. Continue 0.4 miles to gravel parking area. RSVP to Judy at jferris11@gmail.com or 410-474-0368.

June 7 – SUNDAY – 1:00 p.m. – 4:00 p.m.

ANNUAL MEETING

Drum Point Club, Calvert County

465 Overlook Drive, Lusby, MD 20657

Bring your family, friends, and a favorite dish and join us where the Patuxent River meets the Chesapeake Bay. We are really excited to be able to have our annual picnic at this fabulous 25 acre private, non-profit, social club. We have enjoyed this location for field trips this year, and were very pleased to find this to be a great location for Brown-headed Nuthatch! This property includes a beautiful clubhouse, fishing pier, fire pit and expansive sandy beaches. We are all in for a very special treat and a picnic for the memories! Pre-plan your drive, the route is very circuitous!

Potluck Lunch 1:00 – 2:15
Welcome 2:15 – 2:30
Award Presentations and Elections 2:30 – 3:00
Bird Walk 3:00 – 4:00

Mid-June – Watch our website for the date

FIELD TRIP

Patuxent River Park – Jug Bay, Prince George's County

16000 Croom Airport Road, Upper Marlboro, MD 20772

"Osprey Banding Trip"

Leader(s): Carole Schnitzler and Greg Kearns

If you have never been lucky enough to experience this beautiful park and see Osprey chicks up close and personal do not hesitate now! Greg Kearns, park naturalist, is one of the best in his field and provides a very entertaining, fact-filled fun outing. Feel free to come early to have a picnic lunch. Ages: 12 to adult, under 18 must be accompanied by an adult. Maximum of 16 people. Cost: \$26/person, payable the day of, in cash. Pre-register with Carole at cschnitzler55@gmail.com or 301- 266-3966.



June 20 – SATURDAY – 10:00 a.m. – 2:00 p.m.

BALD EAGLE FESTIVAL

PORT TOBACCO RIVER PARK, CHARLES COUNTY

7685 Chapel Point Road, Port Tobacco, MD 20677

See our website and www.charlescountyparks.com for confirmed details. Come and celebrate our local celebrities Chandler and Hope and everything Bald Eagles. Many fun events are planned. American Eagle Day (June 20) is a special day to commemorate the anniversary of the Bald Eagle's selection as our National Symbol, to celebrate its physical recovery to America's skies, and to observe the American values, ideals and attributes for which it stands.



Southern Maryland Audubon Society

P.O. Box 181 • Bryans Road, MD 20616

The Southern Maryland Audubon Society (SMAS) is a chapter of the National Audubon Society (NAS) and is the largest citizen group involved in nature study and natural resource conservation issues in the Southern Maryland counties of Calvert, Charles, St. Mary's and southern Prince George's. SMAS was founded in 1971 and was chartered by the National Audubon Society in 1972. SMAS is a non-profit organization incorporated in Maryland, with activities financed by a membership dues-sharing arrangement with NAS and by SMAS fund raising activities. It operates under the provisions of an approved constitution with business conducted by directors and officers elected by its members.

Monthly Meetings are held from September through June, usually on the first Wednesday of the month. These meetings are publicized in advance, open to the general public, and feature a guest speaker or film dealing with topics of nature and conservation. Arrive at 7:00 p.m. for refreshments and socializing if the program is scheduled for 7:30 p.m.

An Annual Meeting for election of officers is usually held on the first Sunday of June. The program includes a potluck lunch, election, and a late afternoon bird walk. The location varies each year amongst the four counties. Members are encouraged to bring guests.

Field Trips are arranged for various weekends throughout the year and are led by experienced members. Special youth trips are also featured. If you are a new birder we strongly recommend you to join our trips as it is the best way to learn and lots of fun. You will discover the wonderful birding spots in Southern Maryland while learning more about our avian friends. A telephone and/or email address is listed with each leader. Most trips require guests to RSVP. Cancellation notification may be arranged directly from the leader or via the website.

Our Raptor Conservation is a primary effort of SMAS. The Raptor Conservation committee, aided by members, conducts research and enacts conservation activities in Southern Maryland. It is supported by our Adopt-a-Raptor program and currently includes four species: Osprey, Barn Owl, American Kestrel, and Northern Saw-whet Owl. Please see our website or newsletter for adoption details and assist our cause.

2019-2020 OFFICERS

President, Tiffany Farrell somdaudubon.president@gmail.com
Secretary, Julie Simpson jsimps@runbox.com
Vice-President, Margarita Rochow margarita@usa.net
Treasurer, Julie Daniel juliemdaniel@hotmail.com
Past President, Lynne Wheeler somdaudubon@yahoo.com

DIRECTORS

Tim Wells timothw@gmail.com
Tom Seaton tjaccokeek@gmail.com
Elena Gilroy elenabode@yahoo.com
Greg Klesch greg.klesch@gmail.com
Tracey Stuller tmddvm@gmail.com
Lynne Wheeler somdaudubon@yahoo.com

COMMITTEES

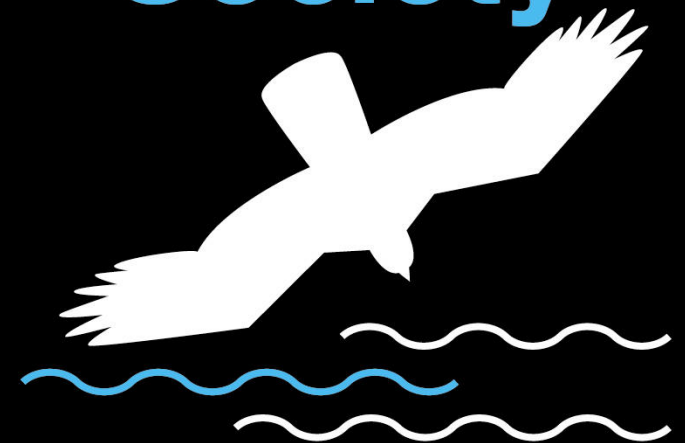
Archives Lynne Wheeler
Bird-Friendly Communities SMAS Board
Conservation Chair: Bob Lukinic
Calvert County – Bob Boxwell
Charles County – Bob Lukinic
Prince George's County – Millie Kriemelmeyer
St. Mary's County – Greg Klesch
Education Chair: Tracey Stuller
Charles County – Jean Artes
St. Mary's County – Jason Hayes
Prince George's County – Millie Kriemelmeyer
Field Trips David Moulton
Finance Nancy Megas
Fundraising Georgiana Klesch
Hospitality Robbi Ross
Membership Lynne Wheeler
Newsletter Editor Tyler Bell
Programs Tom Seaton
Publicity Nancy Megas
Raptor Conservation Mike Callahan
Adopt-a-Raptor Carole Schnitzler
Social Media Nancy Megas
SMAS Special Advisor Carol Gheblian
Youth Outreach Rebecca Turner
Website Karen Showalter

You can become a member of SMAS automatically by joining the National Audubon Society (SMAS receives a fraction of NAS dues) or by joining as a Chapter-only member (SMAS retains all dues received). A National membership provides you six bi-monthly issues of the award winning Audubon magazine. Your membership helps support regional and statewide conservation issues and research studies, along with environmental education and outreach. Membership dues are as follows. Please check your preference and mail to: Southern Maryland Audubon Society, P.O. Box 181, Bryans Road, MD 20616. Or you can visit our website and Join, Renew, or Donate via PayPal.

- Local Chapter-Only (SMAS) Membership
Make check payable to: Southern Maryland Audubon Society.
Individual/Family: 1 yr \$20 2 yr \$35 3 yr \$45 Lifetime \$500
National Audubon Society (NAS) Membership
Make check payable to National Audubon Society.
Note Chapter Code #C9ZL000Z on check.
Introductory Offer: – 1 year \$20

FREE EVENTS

Southern Maryland Audubon Society



2020

JAN-JUNE FIELD TRIPS AND PROGRAMS

facebook

www.somdaudubon.org

Southern Maryland Audubon Society Field Trips, Programs, Meetings & Events

All Southern Maryland Audubon Society program events are open to members and the general public.

January 1 - WEDNESDAY – Noon – 2 p.m.

FIELD TRIP

Chapman State Park, Charles County

3452 Ferry Pl, Indian Head, MD 20640

**“FIRST DAY HIKE AT CHAPMAN STATE PARK:
EAGLES AND WAXWINGS AND DUCKS OH MY!”**

Leader: Lynne Wheeler

Something new! Join us in a popular New Year’s Day tradition by our Maryland State Parks – a First Day Hike! We will hike at one of our favorite Audubon Important Bird Areas and look for winter birds. Wear appropriate footwear and clothing. Bring binoculars if you have them, some will be provided! Difficulty mild – moderate. Check out other First Day Hikes that may be scheduled in your area at <https://dnr.maryland.gov/publiclands/Pages/firstdayhikes.aspx>. RSVP to Lynne at somdaudubon@yahoo.com or text 301-751-8097.

January 2 – Thursday – 7:30 p.m. - 9:00 p.m.

MONTHLY MEETING PROGRAM

La Plata Volunteer Fire Department, Charles County

911 Washington Ave, La Plata, MD 20646

“BARN OWLS OF SOUTHERN MARYLAND”

MIKE CALLAHAN, SMAS Raptor Conservation Chair, Environmental Educator

Come learn about Barn Owls in Southern Maryland. Barn Owls are endangered and in need of conservation in Southern Maryland, but Mike Callahan is leading the effort to re-establish a sustainable breeding program. Mike will discuss the current status of these magnificent and interesting birds, and recent success fledging numerous owlets in Charles County. Light refreshments and mingling starts at 7 p.m. Public is invited. Free event. Inquiries to Tom Seaton at tjsaccokeek@gmail.com or 301-710-3994.



January 12 – SUNDAY – 9:00 a.m. – 12 noon

FIELD TRIP

Jefferson Patterson Park & Museum, Calvert County

“WINTER WATERFOWL TRIP”

Leader: Tyler Bell

Open fields and wooded areas provide good land birding and the river frontage close views of waterfowl. Loons, mergansers, seaducks and dabblers likely, often in great numbers. Call or email Tyler for directions to the meeting spot. RSVP to Tyler at tjtylbell@yahoo.com or 301-862-4623.

January 17 – FRIDAY – 7:00 p.m.

FIELD TRIP – GREAT FAMILY OWTING!!

Elms Environmental Center, St. Mary’s County

49300 St. James Road, Dameron, MD 20628

“OWL PROWL AT THE ELMS”

Leader(s): Bob Boxwell and Margarita Rochow

Come “call out” the owls!! Owls are nocturnal, and therefore not easy to spot. A great Friday night family outing at The Elms. Dress appropriately for the weather, and avoid noisy clothing. This event is weather dependent. Rain or high winds will result in cancellation. Directions: Take Rt 235 south, left onto St. James Church Road (opposite Mattapany Road). You will see the sign for The Elms Environmental Education Center. We will meet in the hunter’s dirt parking lot on the right 100 yards before the gate (**Do not drive past the gate!**) RSVP to Bob at Bobboxwell@hotmail.com or 410-610-5124

January 19 – SUNDAY – 9:00 a.m. – 12 noon

FIELD TRIP

Piscataway Park & Hard Bargain Farm, Prince George’s County

2301 Bryan Point Road, Accokeek, MD 20607

“WINTER WATERFOWL AND RESIDENT BIRDS”

Leader(s): Lynne Wheeler and Bill Townsend

This is a joint trip with the Audubon Naturalist Society. The varied habitat of water, woods, farm fields and edges provide for a great variety of birds. See fergusonfoundation.org for directions. Bill Townsend, HBF Educator Associate will meet you at the entrance (red Chevy). No fee. Limit to 20 participants. RSVP to Lynne Wheeler at somdaudubon@yahoo.com or 301-751-8097 (prefer text).

January 25 – SATURDAY – 8:00 – 11 a.m.

FIELD TRIP

Drum Point, Calvert County

“WINTER BIRDS OF THE CHESAPEAKE BAY”

Leader: Sherman Suter

This is the first time we have attempted a mid-winter trip to Drum Point, which sits astride the confluence of the Patuxent River and the Chesapeake Bay. The views of open water east across the Bay and south across the river mouth provide a wide angle lens on the rafts of seaducks and other waterfowl that call the Bay their winter home. On land, we will explore trails that the Drum Point Club maintains through dense pine groves and along the shores of a sheltered tidal pond. Location is private. RSVP required by Thursday, January 23. Directions to the meeting point will be shared when you RSVP to Sherman Suter at shermansuter@gmail.com or 410-586-1073.

February 12 – Wednesday – 7:30-9:00 pm

MONTHLY MEETING PROGRAM

North Point High School, Charles County

2500 Davis Road, Waldorf, MD 20603

**“SCHOLARSHIP WINNERS PRESENT THEIR
HOG ISLAND, MAINE EXPERIENCES”**

Every year the Southern Maryland Audubon Society (SMAS) gives a scholarship to teachers, environmental educators and students from our community to attend Nation Audubon’s Camp in Hog Island, Maine. The camp offers many environmental and wildlife programs to choose from. Come and hear our 2019 scholarship winners: Kristin Bourgeois, Holly Fallica, and Scott Clark share their experiences. This is a great time for any teachers who are considering applying for our 2020 scholarship to get in depth knowledge about this wonderful opportunity. Light refreshments and mingling starts at 7 p.m. Public invited. Free event. Inquiries to Tom Seaton at tjsaccokeek@gmail.com or 301-710-3994.



GREAT BACKYARD BIRD COUNT

The 23rd annual GBBC will be held Friday, **February 14**, through Monday, **February 17**. Please visit the official website at birdcount.org for more information and be sure to check out the latest educational and promotional resources. Bird populations are always shifting and changing. Want to host an event? Send us an email to somdaudubon@yahoo.com we will help you make it happen!

Saturday, February 15, 8 a.m. – 10 a.m.

Flag Ponds Nature Park, Calvert Nature Society

1525 Flag Ponds Parkway, Lusby, MD 20657

Leader: Calvert Stewards -

Great Backyard Bird Count

Must register at www.calvertparks.org

Sunday, February 16, 10 a.m. – 11 a.m.

Wild Birds Unlimited

58 Shining Willow Way, La Plata, MD 20646

Leader: Southern Maryland Audubon Society

Please join us at our favorite new business in La Plata. We will discuss how to participate in the Great Backyard Bird Count – and then talk a 30 minute walk behind the store and we will do our own count. No rsvp – just come and have fun! Some binoculars will be provided. Smart phone good idea, download eBird.org app if interested.



February 15 - SATURDAY – 7:00 p.m.

FIELD TRIP

Private Farm, Charles County

“BARN OWL PROWL”

Leader: Mike Callahan

Join us on this night hike to look and listen for the rare, year round resident owl of Southern Maryland, the Barn Owl. The farm is owned by the Wicomico Valley Foundation of Southern Maryland. This is a great family outing! Bring a reusable mug for hot chocolate. The exact meeting location will be given at registration. Suggested donation of \$5.00 per person. RSVP to Mike at raptorsrulemc@gmail.com or 240-765-5192.

February 23 – SUNDAY – 8 a.m. – 12 noon

FIELD TRIP

Patuxent River Naval Air Station, St. Mary’s County

**“WINTER BIRDS AND TUNDRA SPECIALISTS
AT PAX RIVER AIRFIELD”**

Leader: Kyle Rambo

We are fortunate to have access to airfields that provide tundra like habitat. This trip will feature typical winter airfield birds such as Snow Buntings, Lapland Longspurs, Short-eared Owls, Horned Larks, Savannah Sparrows, and possible Wilson’s Snipe and Peregrine Falcon. Preregistration is required and open to U.S. citizens only. Trip is limited to 10 people. Must bring a photo I.D. Meet at Gate #1 Visitor Parking Lot. RSVP to kyle.rambo@navy.mil or 301-757-0005.

March 4 – Wednesday – 7:30 p.m. - 9:00 pm

MONTHLY MEETING PROGRAM

Kings Landing Park, Calvert County

3255 Kings Landing Rd., Huntingtown, MD 20639

“BRAZILIAN PANTANAL: BIRDS, MAMMALS, AND MORE”

Gwen Brewer and George Jett

From macaws, woodcreepers, and storks to jaguars, giant anteaters, and giant river otters, the extensive wetlands and grasslands of the Pantanal and nearby cerrado host an amazing diversity of life. Come and enjoy a presentation about the fauna inhabiting this unique and remarkable area in Brazil. Light refreshments and mingling starts at 7 p.m. Public invited. Free event. Inquiries to Tom Seaton at tjsaccokeek@gmail.com or 301-710-3994.



March 15 – SUNDAY – 10:00 a.m. – 12 noon

FAMILY FIELD TRIP – YOUTH WELCOME

Port Tobacco River Park, Charles County

7685 Chapel Point Road, Port Tobacco, MD 20677

“EAGLE NEST AND SIGNS OF SPRING”

Leader: Lynne Wheeler

Join us for an update about our Port Tobacco River Park eagle nest and learn about the **Maryland Bird Conservation Partnership** citizen-science monitoring program. Volunteers document the nesting success and productivity of Maryland’s Bald Eagle population to help us to identify what conservation actions may be needed in the future. Maintaining an active monitoring program is vital to knowing when and where changes to breeding eagles are taking place. We will also walk the Wetlands Trail and look for signs of spring!

April 1 – WEDNESDAY – 7:30 p.m. – 9:00 p.m.

MONTHLY MEETING PROGRAM

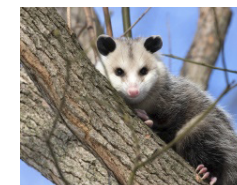
La Plata Volunteer Fire Department

911 Washington Ave, La Plata, MD 20646

“AWESOME POSSUMZ”

KAREN BRACE, *Licensed Wildlife Rehabilitator*

Come learn about the natural history of the Virginia opossum, North America’s only marsupial. Karen Brace will introduce you to “Stuart” and address the misconceptions and misinformation that surround North America’s only native marsupial. Come learn about the opossum’s “super powers,” where they live, what they eat, and how



they help the environment. Light refreshments and mingling starts at 7 p.m. Public is invited. Free event. Inquiries to Tom Seaton at tjsaccokeek@gmail.com or 301-710-3994.

April 11 – SATURDAY – 8 a.m. – 12 noon

FIELD TRIP

Marbury, Charles County

2750 Sweden Point Road, Marbury, MD 20658

**“SMALLWOOD STATE PARK –
RED-HEADED WOODPECKERS AND MIGRANTS”**

Leader: Lynne Wheeler

Smallwood State Park has become one of the best locations for Red-headed Woodpeckers in the state. We will also look for early migrants and Louisiana Waterthrush is highly likely to be seen. Meet at 8 a.m. at Pavilion 1 parking area, past the campground entrance. This is a joint trip with the Audubon Naturalist Society. RSVP to Lynne at somdaudubon@yahoo.com or 301-751-8097 (prefer text).

April 18 – SATURDAY – 9:00 a.m. – 12 noon

FIELD TRIP

Elms Environmental Education Center, St. Mary’s County

49300 St. James Road, Dameron, MD 20628

“BIRDING 101”

Leader(s): Bob Boxwell

Calling on all wannabe birders!! Youths Welcome!!

Are you tired of wondering and saying “What bird is that?” Do you want to get better at knowing what birds you are seeing? Birding 101 is the field trip for you! The more you walk the walk, the better you become! The Elms Environmental Education Center offers great habitat for birds. Your leaders will share helpful identification pointers such as: bird bill and facial markings, plumage details, field marks, flight patterns, sound, behavior, and habitat and seasonal expectation. Learn about birding apps too. The address is 49300 St. James Road, Dameron, MD 20628. Take Rt 235 south, left onto St. James Church Road (opposite Mattapany Road). You will see the sign for the Elms Environmental Education Center. We will meet in the hunter’s dirt parking lot on the right 100 yards before the gate. Do not drive past the gate. RSVP to Bob at Bobboxwell@hotmail.com or 410-610-5124.

April 19 – SUNDAY – 1:00 p.m. – 3:00 p.m.

BIRD CELEBRATION – BIRD CITY MD

La Plata, Charles County

La Plata Train Station Museum, 101 Kent Avenue, La Plata, MD 20646

**“TOWN OF LA PLATA - PURPLE MARTINS,
BIRD CITY MD AND ARBOR DAY”**

Leader: Southern Maryland Audubon Society, Port Tobacco River Conservancy and Conservancy for Charles County

For the last few years our Town of La Plata official bird, the Purple Martin, has returned from its southern migratory journey by April 17. Come celebrate their return, meet our passionate Purple Martin “housekeepers”, and learn about this fascinating flyer. We will also celebrate the Town of La Plata becoming the first member of Bird City Maryland and provide information about National Arbor Day. “Our world without native trees - no insects, no birds - where humans cannot thrive.”



May 3 – SUNDAY – 8:00 a.m. – 11:00 a.m.

FIELD TRIP

Sotterley Plantation, St. Mary’s County

44300 Sotterley Plantation, Hollywood, MD 20636

“What’s Soaring at Sotterley”

Leader(s): David Moulton

Celebrate Earth Day week with a birdwalk at this scenic and historic Patuxent River property as the annual surge of migrating birds begins throughout St. Mary’s County. Nesting Bald Eagles, migrating warblers, meadowlarks, woodpeckers and waterfowl can all be found via Sotterley’s extensive new trail system. From Rt. 235, go north on Sotterley Road, turn right through the gates to the gravel parking lot on the Sotterley historic property. RSVP at moulton.davidh@gmail.com or 240-278-4473.